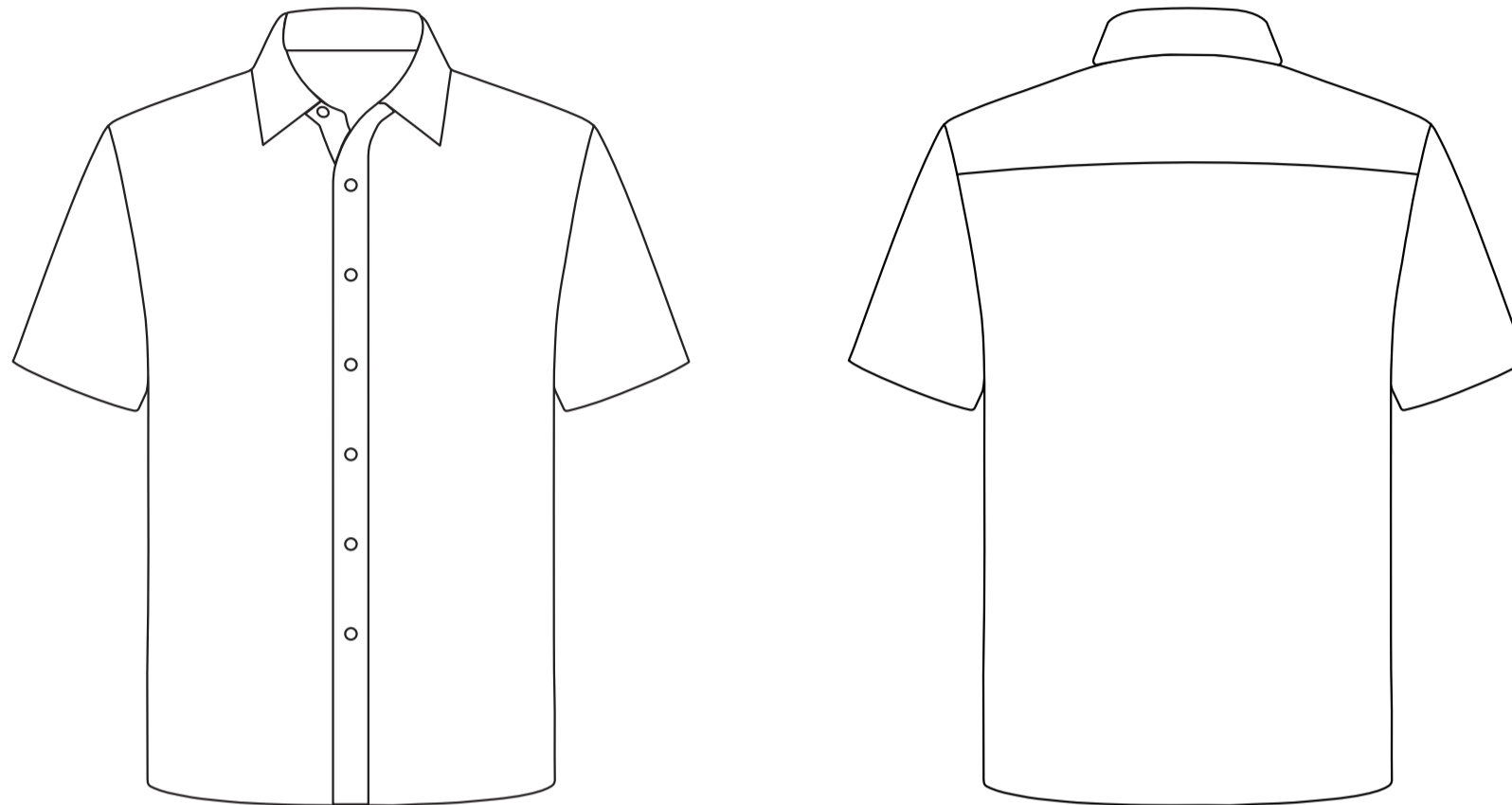


Product: PCC028  
 Product Size: Size S: chest=107cm; Body length=71.8cm  
 Size M: chest=112cm; Body length=73cm  
 Size L: chest=117cm; Body length=74.2cm  
 Size XL: chest=122cm; Body length=75.4cm  
 Size 2XL: chest=127cm; Body length=76.6cm  
 Size 3XL: chest=132cm; Body length=77.8cm

Decoration Options: Sublimation

Size:L



Shown at 15% actual size

\*Please note, some information on tags may be covered by the stitching seam connecting it to the garment. Please take note when designing your tag. This applies to the neckline, shoulder seam, side seam, sleeves or bottom hem.

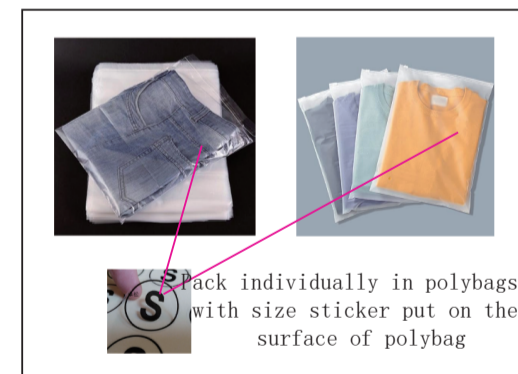
### Size splits

Choose the corresponding size range of this SKU

Men's size	S	M	L	XL	2XL	3XL	4XL	5XL
order quantity								

LOGO refer colour

- ■ PMS XX C
- ■ PMS XX C
- ■ PMS XX C



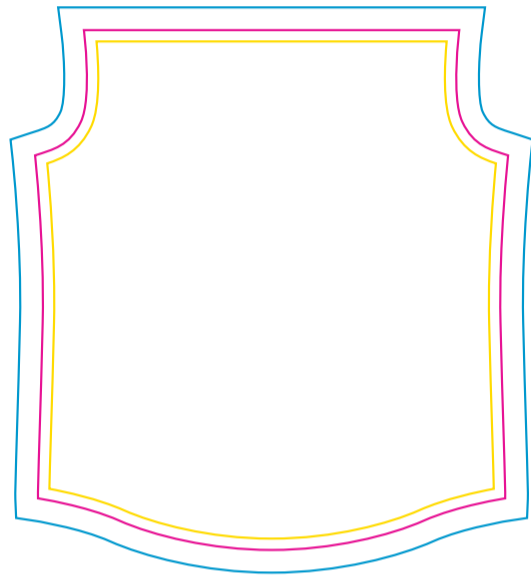
pack individually in polybags, with size sticker put on the surface of polybag

label type	✓ if required (customized brand label will cause additional cost, our product included standard size label and wash label)	
brand label		
size label		
wash label		

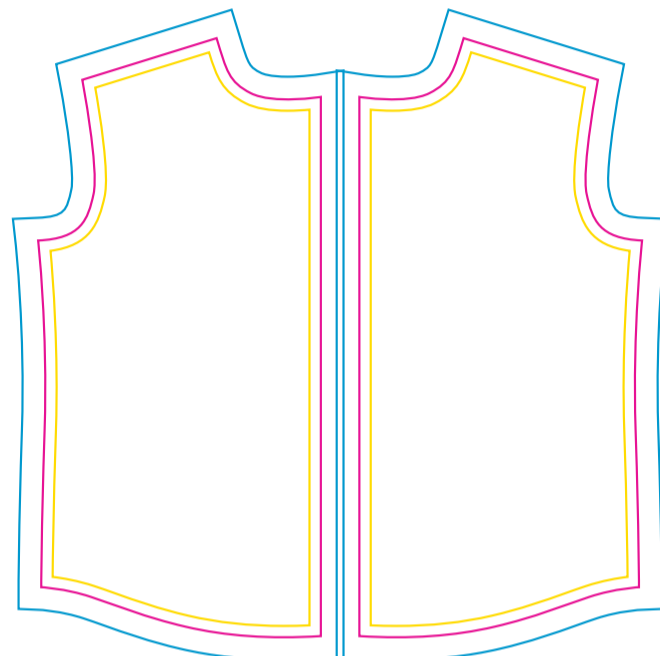


A size label and a washing label is included by default.

Size:L



Print size: 625.7mm(w) x 687.3mm(h)  
Shown at 10% actual size



Print size: 373.9mm(w) x 792.1mm(h)

collar outside



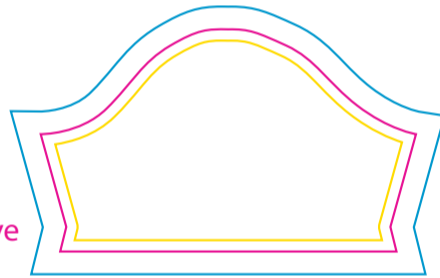
collar inside



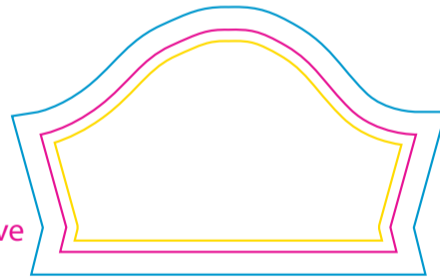
Print size: 532.5mm(w) x 102.7mm(h)

\*This two panels should be mirror symmetry

left sleeve

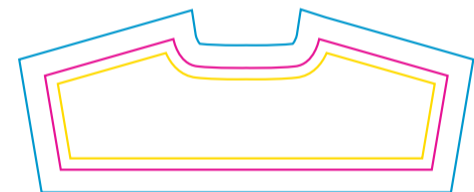


right sleeve

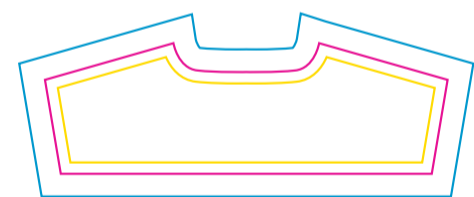


Print size: 496.4mm(w) x 293.8mm(h)

back yoke outside



back yoke inside



Print size: 532.5mm(w) x 172.6mm(h)

\*This two panels should be mirror symmetry

- Knife line
- Safe print area
- Bleed area